

SUPREME'S STAR BRAND: DURABOARDHD100

The Supreme Industries Ltd, founded in 1942, pioneered many pathbreaking products in the country and became trendsetters in plastics products by introducing many advanced solutions for various applications and industries. **Ajay Mohta, General Manager, Construction Accessories Division**, talks about the company's star brand, **DURABOARDHD100**.

"The Construction Accessories Division of Supreme has developed customized solutions specifically for construction requirements of various segments. All our products have been developed after continuous research and understanding the needs of changing demands of the new generation constructions. Many of these products have been pioneered by Supreme.

A case in point is the creation of a low compression set filler board (DURABOARDHD100), especially for expansion joints application to replace less effective bitumen board-based solutions," he said.

"The Division offers new generation, better alternative products to conventional materials like rubber, metals, and wood, thus being cost-effective. The 'DURA' range of products is manufactured from virgin raw material and we do not use any CFC/HCFC gases. At every stage of the manufacturing process, a stringent quality check methodology assures the reliability of the products," adds Mohta.

DURABOARDHD100 (formerly SILFLEX/CAPCELL HD100) is an exclusive compressible filler board especially designed to be used as expansion joint filler in concrete brick, block work and isolation joint, where readily compressible low load transfer joint filler is required. Its excellent recovery property makes it the most suitable product for this application.

DURABOARDHD100 is a high performance, pre-moulded compressible filler board,

closed cell joint filler material available in the board/sheets form. It is very lightweight. This makes it easy to handle and install. Being polymer-based, it is rot-proof and bacteria-resistant.

The striking features of DURABOARDHD100 are: Bitumen free -- can be cut in any size with a normal knife; Excellent recovery of 95% after compression up to 50 per cent; Polymer-based -- hence it won't deteriorate over a long period; Resilient and does not distort under normal load from wet concrete; Non-staining.

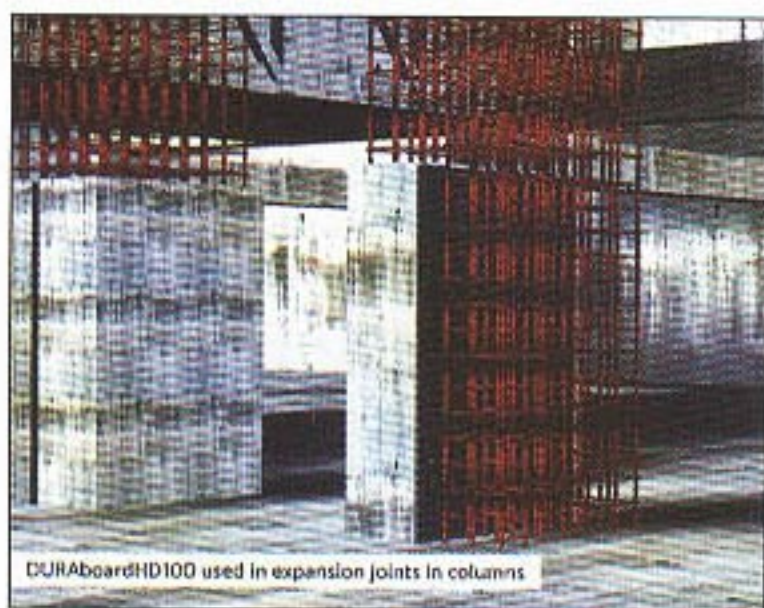
DURABOARDHD100 can be used in: Expansion joints in building, concrete structure; Expansion joints in concrete roads, parking areas, industrial flooring etc; Joints in bridges, decks, water retaining and water excluding structures, etc. Isolation joints in machine foundation.

It is massively used in PQC & various structures for NHAI, AAI, Real Estate and British Specification and specification for highway works clause 1015.

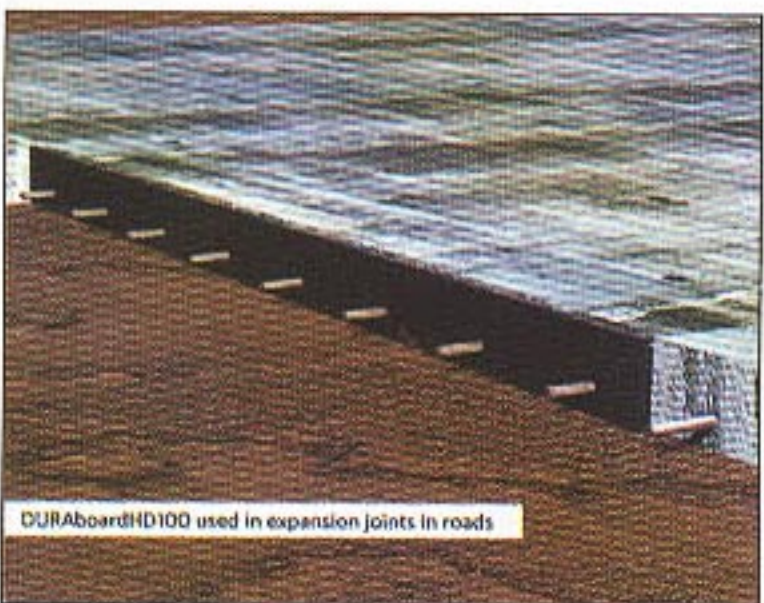
"Some government organizations still hesitate to use the new generation products and follow old specification of using bitumen-based boards and cork sheets which disintegrate over a period of time. Bitumen board absorbs water and hardly recovers once compressed -- it defeats the purpose of application. It absorbs water and oozes bitumen thereby staining the structure. Supreme has a number of satisfied customers (government, semi-government and private) who have stopped using and recommending bitumen boards/corks sheets after understanding the benefits of DURABOARDHD100," concludes Mohta.

CONTACT :

Ajay Mohta
+91-9831020808/9810495550
dura@supreme.co.in
www.supreme.co.in



DURABOARDHD100 used in expansion joints in columns



DURABOARDHD100 used in expansion joints in roads