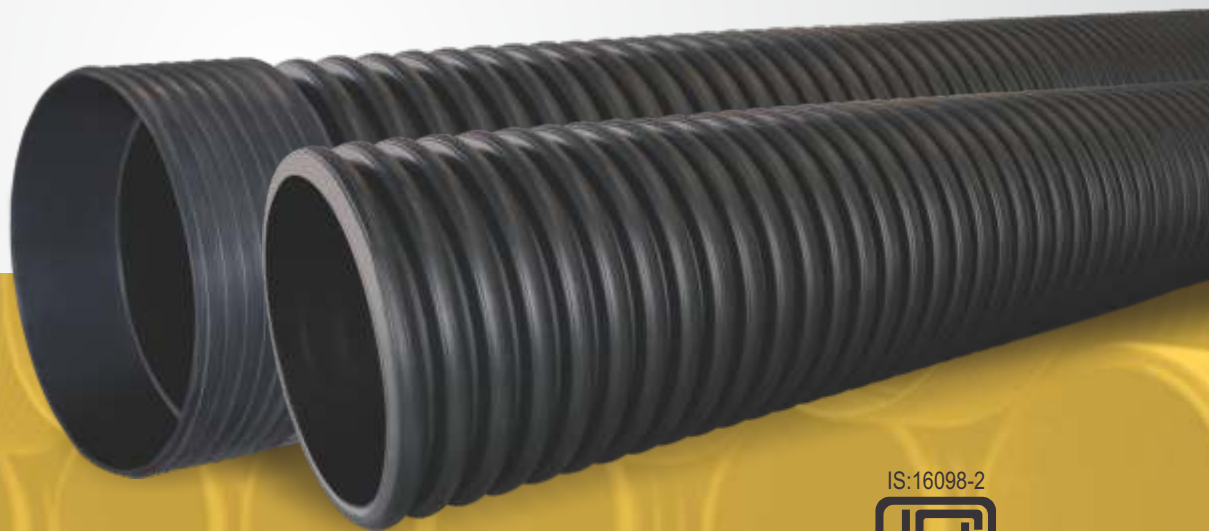


Ultra PLUS

Double Wall Corrugated Pipes

...an Ideal pipes for drainage and sewerage application



IS:16098-2



CM/L-7700079217

Jeevan bhar ka saath...



Supreme[®]
People who know plastics best

Ultra PLUS

Double Wall Corrugated Pipes

The Supreme Industries Ltd., is an acknowledged leader of India's plastic industry. It is credited with pioneering several path breaking products and has valuable experience in providing innovative and cost effective piping solution. Company's objective is to meet the growing needs of its clientele in water, waste management and infrastructure sector through specially developed high performance range of piping products. The innovative product portfolio offered by Supreme is extensive in range and application and comprises a variety of pipes and a vast spectrum of fittings totaling around 7000 diverse products. Together these constitute the most comprehensive range in the industry that caters to almost every conceivable need and application. Company has been a torch bearer in transition from conventional products to advanced plastic piping products in the country and has been termed as "Trend Setters of Plastic Piping Products".

Supreme Ultra plus double wall corrugated pipes are more stronger than solid wall pipes. They have a unique wall structure with corrugated structure externally and smooth surface internally. This specific structure ensures a wonderful combination of lowest inner friction, smooth internal flow characteristics without any blockage, high flexibility, superior strength to weight ratio. Besides this, corrugated structure on the external face of the pipes provides highest ability to support and distribute live and dead loads thereby, meeting every installation conditions. It performs exceptionally well to sustain soil and traffic loads that the pipe will encounter in service under buried condition in high and low cover situations. Supreme Ultra plus pipes produced with state-of-the-art technology offers multiple benefits, especially as they are much lighter than any conventional pipes and even lighter than solid wall plastic (PVC, HDPE or PP) pipes. This remarkable material efficiency not only makes these pipes competitive but advantageous in terms of handling and installation.

UNIQUE FEATURES

Great flexibility- Due to lighter in weight and elastic nature, these pipes offer lot of flexibility while installation as they are adaptable to any type of contour patterns.

Excellent stiffness- suitable to withstand heavy overload pressure(soil and traffic loads) and sustain various loads that will encounter during installation and in use.

Perfect hydraulic properties- Glass smooth inner surface having manning's coefficient 0.009 – 0.010 (which remain constant without any deterioration during life expectancy) helps in rapid disposal of flowing waste. This greatly reduce the possibility of blockage and maximize the flow characteristics and therefore carrying capacity increases by 40% over concrete pipes.

Excellent chemical, corrosion and abrasion resistance - Being in plastics, these pipes are free from corrosion and offer excellent resistance to wide range of chemicals. These pipes have excellent abrasion resistance which gives an edge over metal and concrete pipes.

Watertight joints- 100% watertight joints and hence free from any infiltration, ex-filtration and root penetration. Due to this, surroundings remain unaffected and possibility of soil or underground water pollution is eliminated.

Easy and quick installation- Due to longer lengths and

lighter weight pipes installation becomes very convenient and fast. These pipes are very easy to joint using slip-on techniques with welded or individual couplers provided with the pipes. Unlike conventional concrete or metallic pipes these pipes do not require any heavy handling equipment for installation due to their light weight property. These pipes can be easily laid in constrained areas thereby saving additional extraneous costs. Thus these pipes are very user-friendly and cost effective.

Maintenance free – Being free from scaling, encrustation and chemical re-activeness there is no need of any regular maintenance, occasional flushing with water keeps the surface smooth and aids the usable age enhancing functions.

Long life - Being free from corrosion, chemical reactiveness and excellent abrasion resistance these pipes can last over 100 years

Cost effective - 60 to 70% weight saving in comparison to solid wall plastic pipes and hence much cost effective. These pipes are 95% lighter than concrete pipes.

Eco-friendly- Processing and reprocessing does not have any adverse impact on the environment and due to watertight joints there is no possibility of soil and underground water pollution.

PRODUCT RANGE

Supreme DWC pipes manufactured according to IS : 16098 standard are offered in 100 to 600 mm sizes in SN 4 and SN 8 stiffness class. These pipes are made available in plain end form as well as with integral sockets along with necessary fittings. Assembly jig required for the installation is also made available.

Dimension of DWC pipes

Nominal Size DN/ID Series (mm)	Approx ID (mm)	Approx OD (mm)
100	98.0	116.0
150	148.5	172.5
200	197.4	230.5
250	248.5	289.0
300	300.0	350.0
400	395.2	465.0
500	496.7	577.0
600	594.6	685.0

PIPES & FITTINGS



Bend 90°



Bend 45°



Equal Tee



Cross Tee



Concentric Reducer

Adapter for DWC Pipes:

These specially designed adapters are suitable for connecting double wall corrugated pipes with the manhole and/or to connect R/R or pasted type socketed PVC pipes with the DWC pipes.

APPLICATIONS

Supreme Ultra plus DWC pipes can be used for varied application as mentioned below

- Underground Drainage and Sewer application
- Storm water drainage
- Road / Highway cross drainage
- Disposal of industrial effluents
- Rainwater harvesting and ground water recharge

These applications are a very few and the PE DWC pipes are finding a new uses almost regularly adding further benefits to this superior technological marvel at a very fast pace.



Ultra PLUS

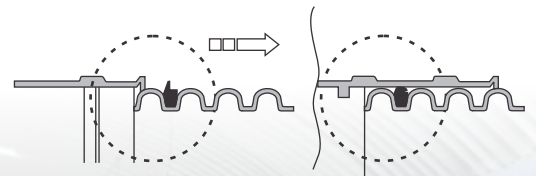
Double Wall Corrugated Pipes

JOINING PROCEDURE

Pipes up to 250 mm as well as 500 and 600 mm sizes are supplied plain ended with separate couplers whereas 300 mm and 600 mm sizes are supplied in both varieties i.e. with integral sockets as well as with separate couplers. Procedure for joining these two types of pipes is given below.

Joining procedure for pipes with integral socket

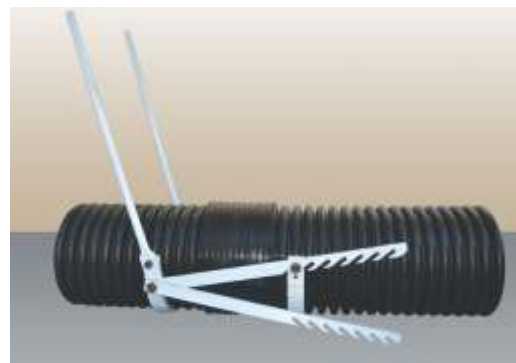
1. Take two pipes with integral socket and one EPDM sealing ring, ensure that the pipe socket is free from damages.
2. Fit EPDM rubber seal into the first corrugation of the plain ended pipe, making sure that the seal is correctly placed.
3. Ensure the seal is not twisted.
4. Align the socket end of pipe with non socket end of the other pipe.
5. Clean and remove dirt/dust/water etc. from the pipes end and pipe socket.
6. Mount the fixture on plain end of pipe and on socketed end of other pipe for joining. Fixture shall be duly placed in the grooves for better holding.
7. Apply lubricant on the EPDM rubber ring and inside of socket.
8. Place the pulling arms of the fixture on either side on the appropriate pin.
9. Pull the pipes in to the socket till it reaches the stopper end.
10. Remove the fixture and clean extra lubricant from the pipe ends.
11. Ensure that the fitment is secure and the socket is not damaged or broken or burst/open anywhere. Continue the same process for all socketed pipe joint.





Joining procedure for plain ended pipes

1. Take two pipes, two sealing rings and one coupler.
2. Fit EPDM rubber rings into the first corrugation of each pipe, making sure that the seal is correctly placed.
3. Clean the pipe ends, socket of the coupler and rubber sealing rings and apply lubricant on the sealing ring placed on the pipe ends and inside of the coupler socket up to the pipe stopper.
4. Align the pipe ends and coupler socket, face to face and put the jointing fixture over the pipe end and coupler. With the help of fixture, pull the coupler in to the pipe till the pipe reaches to the stopper end.
5. Follow the same procedure for joining of coupler socket to another plain end pipe.



QUALITY TESTINGS & CERTIFICATIONS



We are equipped to carry out all stringent tests required as per IS: 16098 and also ISO 21138 and EN 13476. This helps us to maintain superior quality and to ensure trouble free performance of our products. Some of the important tests for double wall corrugated polyethylene pipes are as given below.

Ring Stiffness

Impact Test

Ring Flexibility

Water Tightness Test

Creep Ratio

Melt Flow Index Test

Oxidation Induction time Test

Effect on heating

Physical properties

• Any specification can change without prior notice. • All information contained in this literature is given in good faith and believed to be accurate and reliable. But because of many factors which may be outside our knowledge and control and affect the use of the product, no warranty is given or is to be implied with respect to such information, nor do we offer any warranty of immunity against patent infringement. No responsibility can be accepted for any error, omissions or incorrect assumptions.

The Supreme Industries Ltd. (Plastic Piping Division)

Corporate Office : 1161/1162, Solitair Corporate Park, Building No. 11,167, Guru Hargovindji Marg, Chakala, Andheri Ghatkopar Link Road, Andheri (East) Mumbai - 400 093. India. Tel: 91-22-67710000, 40430000 Fax: 67710099/40430099.

Regd. Office : 612 Raheja Chambers, Nariman Point, Mumbai 400 021. India Tel.: (022) 22851656, 22820072 Fax : (91-22) 22851657

E-mail: pvc-pipes@supreme.co.in **Website :** www.supreme.co.in

Works : D-101/102, MIDC, Jalgaon - 425 003.

• Unit No.3, Gat No.47-48, at post Gadegaon, Tal. Jamner ,Dist., Jalgaon- 425 114

Export Division : 91-22-6771 0126 / 4043 0126 Fax : 6771 0130

Overseas Office : Sharjah, U.A.E. Tel # + 971 6 557 4484; Fax # + 971 6 557 4485

CIN: L35920MH1942PLC003554

Branch Offices Tel.

Ahmedabad : 079-30028371

Bangalore : 080-30913715

Chennai : 044-39811181

Cochin : 0484-2385346

Hyderabad : 040-23261150

Indore : 0731-2432684

Jaipur : 07042894955

Jalgaon Gadegaon : 0257-3050541,42

Kanpur : 0512-2332276

Kolkata : 033-30070123

Noida (Delhi) : 09810072318

Fax

27680064

22104697

43850498

2385345

23261120

2432684

3050611

2332276

24858838

Authorised Distributor

