

INTRODUCING

Flush Valves

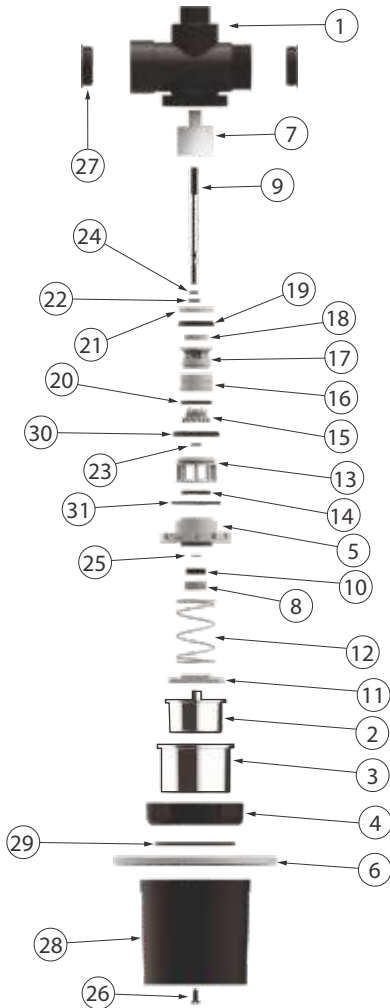
The Supreme is an acknowledged leader of India's plastic industry. With a portfolio of over 7500 diverse products, the most comprehensive range in the industry, we cater to almost every conceivable need and application of the customer in piping. While helping the country transit from conventional to modern piping, we have several path breaking products to our credit making us a trend setter in the industry. In line with the tradition of pioneering many innovative products, we are pleased to introduce one more innovative product "Flush Valve" in engineering plastics. These flush valves have many good features that provides efficient and economical flushing solution for building industry besides adding to the aesthetic look. These valves are totally free from corrosion and leakages and, offer longer service life. It is provided with inbuilt flow regulating mechanism which is useful in case of water shortage.



Unique features

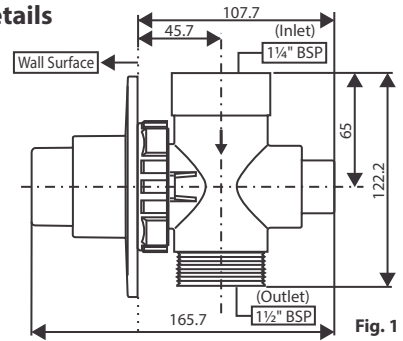
- Compact and sturdy design
- Easy and smooth to operate
- Efficient flushing with proper flow regulation
- Consistent performance under repeated flushing
- Flow can be adjusted as per the application requirement
- Elegant look - chrome finished Push Button and Wall Flange
- Free from staining
- Free from corrosion
- Threaded connections for easy installation
- Push button for smooth flushing
- Long life
- Cost effective

Construction of Concealed Flush Valve



Part No.	Part Name	Part No.	Part Name
1	Main Body	17	Seal Piston Part 3
2	Push Control Cock	18	Seal Piston Part 4
3	Sleeve	19	Seal Piston Part 5
4	Top Ring	20	Seal Piston Part 6
5	Top Housing	21	Seal Piston Part 7
6	Wall Flange	22	Circlip 1
7	Housing	23	Seal Ring (spindle)
8	Gland Nut	24	O-ring (spindle)
9	Spindle	25	Circlip 2 (spindle)
10	Seal Washer	26	M5 Screw
11	Adjustable Key	27	Cap for Ext-thread
12	Spring	28	Cap For Chrome Parts
13	Stopper Bush	29	O-Ring (Sleeve & wall flange)
14	O ring (Stopper bush)	30	O-Ring(Top HSG & Body)
15	Seal Piston Part 1	31	O-Ring (Body - inner)
16	Seal Piston Part 2		

Dimension details



Working mechanism

The Push Control Cock (Fig.3) is pressed to flush the water. The discharge volume at household pressure is minimum 6±1 liters at full open condition. The volume is regulated by the push cock . Rotate it in clockwise direction to reduce the discharge and in anti-clockwise direction to increase the same (see Fig.3).

Maintenance

To avoid water wastage due to damaged part, the valve can be shut off by turning the push cock clock-wise till it is tightened. After the shut-off, the mechanism can be removed without disturbing the pipeline. The damaged part can be replaced accordingly.

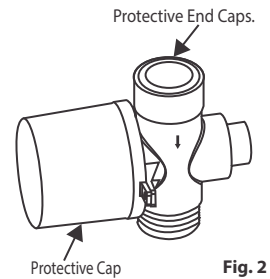


Fig. 2

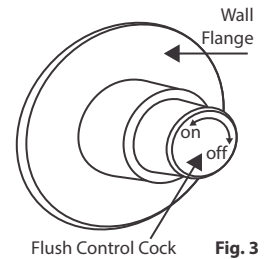


Fig. 3

Installation guidelines

- Flush Valve is supplied in a box in assembled form with the caps (Fig.2) for its protection and wall flange in separate packing.
- Ensure that pipe ends are clean and free from debris.
- Flush valve is provided with threaded ends on both inlet and outlet sides. The inlet threads are 1¼" BSP and outlet threads are 1½" BSP. Remove the caps on inlet and outlet to fit it on the wall in its proper place to connect with the pipe ends.
- Use of Teflon tape or thread sealant is recommended while fixing flush valve with threaded pipe. After making the joints, ensure that both the joints are leakproof prior to concealing.
- Remove the cap on chrome plated parts only after completion of installation and finishing of the wall to protect them from scratches.
- After removing the cap, slide fit the wall flange.
- Working pressure of the flush valve is 1- 4 bar.