

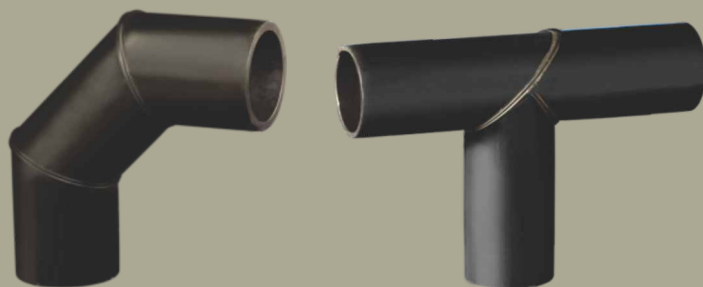
Polyethylene Solid Wall Pipes for Sewerage Application

... The next generation piping



The Supreme Industries Ltd. is an acknowledged leader of India's plastic industry. It is credited with pioneering several path breaking products and has gained a valuable experience in providing innovative and cost effective piping solutions. The Company has been a trend setter and a torch bearer in the transition from conventional to advanced plastic piping products in the country. The Company's objective is to meet the growing needs of its clientele in water and waste management and in infrastructure sector through a specially designed high performance range of piping products. The innovative product portfolio offered by Supreme is extensive in nature and applications. With its range of over 8000 products, the most comprehensive in the piping industry, Supreme caters to almost every conceivable need and application in piping.

Supreme offers complete range of PE pipes for variety of application segments like water supply, drainage, sewerage and industrial applications. Supreme PE pipes are user friendly, simple and easy to fit and equipped with many outstanding features that assures long term system performance and low maintenance cost.



Dimensions of HDPE Pipe - PE 80 as per IS:14333-1996

Dia DN	PN 2.5		PN 4		PN 6		PN 8		PN 10		PN 12.5		PN 16	
	Min	Max	Min	Max	Min	Max	Min	Max	Min	Max	Min	Max	Min	Max
63	-	-	3.0	3.5	4.4	5.1	5.8	6.6	7.0	7.9	8.6	9.7	10.5	11.8
75	2.3	2.8	3.6	4.2	5.3	6.1	6.9	7.8	8.4	9.5	10.2	11.5	12.5	14.0
90	2.8	3.3	4.3	5.0	6.3	7.8	8.2	9.3	10.0	11.2	12.2	13.7	15.0	16.7
110	3.4	1.0	5.3	6.1	7.7	8.7	10.0	11.2	12.3	13.8	14.9	16.6	18.4	20.5
125	3.8	1.4	6.0	6.8	8.8	9.9	11.4	12.8	13.9	15.5	16.9	18.8	20.9	23.2
140	4.3	5.0	6.7	7.6	9.8	11.0	12.8	14.3	15.6	17.4	19.0	21.1	23.4	26.0
160	4.9	5.6	7.7	8.7	11.2	12.6	14.6	16.3	17.8	19.8	21.7	24.1	26.7	29.6
180	5.5	6.3	8.6	9.7	12.6	14.1	16.4	18.3	20.0	22.2	24.1	27.1	30.1	33.2
200	6.1	7.0	9.6	10.8	14.0	15.6	18.2	20.3	22.3	24.8	27.1	30.1	33.4	37.0
225	6.9	7.8	10.8	12.1	15.7	17.5	20.5	22.8	25.0	27.7	30.5	33.8	37.8	41.5
250	7.6	8.6	12.0	13.4	17.5	19.5	22.8	25.3	28.7	30.8	33.8	37.4	41.7	46.1
280	8.5	9.6	13.4	15.0	19.6	21.8	25.5	28.3	31.2	34.6	37.9	41.9	46.7	51.6
315	9.6	10.8	15.0	16.7	22.7	24.4	28.7	31.8	35.0	38.7	42.6	47.1	52.5	58.0
355	10.8	12.1	17.0	18.9	24.8	27.5	32.3	35.8	39.5	43.7	48.0	53.0	59.2	65.4
400	12.2	14.3	19.1	22.2	28.0	32.4	36.4	42.1	44.5	51.4	54.1	62.5	-	-
450	13.7	16.0	21.5	25.0	31.4	36.4	41.0	47.4	50.0	57.7	-	-	-	-
500	15.2	17.7	23.9	27.7	34.9	40.4	45.5	52.6	55.6	64.2	-	-	-	-
560	17.0	19.8	26.7	31.0	39.1	45.2	51.0	58.9	-	-	-	-	-	-
630	19.1	22.2	30.0	34.7	44.0	50.8	57.3	66.1	-	-	-	-	-	-

Dimensions of HDPE Pipe - PE 100 as per IS:14333-1996

Dia DN	PN 6		PN 8		PN 10		PN 12.5		PN 16	
	Min	Max	Min	Max	Min	Max	Min	Max	Min	Max
63	3.6	4.2	4.7	5.4	5.8	6.6	7.0	7.9	8.7	9.8
75	4.3	5.0	5.6	6.4	6.9	7.8	8.4	9.5	10.4	11.7
90	5.1	5.9	6.7	7.6	8.2	9.3	10.0	11.2	12.5	14.0
110	6.3	7.2	8.2	9.3	10.0	11.2	12.3	13.8	15.2	17.0
125	7.1	8.1	9.3	10.5	11.4	12.8	13.9	15.5	17.3	19.3
140	8.0	9.0	10.4	11.7	12.8	14.3	15.6	17.4	19.4	21.6
160	9.1	10.3	11.9	13.3	14.6	16.3	17.8	19.8	22.1	24.6
180	10.2	11.5	13.4	15.0	16.4	18.3	20.0	22.2	24.9	27.6
200	11.4	12.8	14.9	16.6	18.2	20.3	22.3	24.8	27.6	30.6
225	12.8	14.3	16.7	18.6	20.5	22.8	25.0	27.7	31.4	34.5
250	14.2	15.9	18.6	20.7	22.8	25.3	27.8	30.8	34.5	38.2
280	15.9	17.7	20.8	23.1	25.5	28.3	31.2	34.6	38.7	42.8
315	17.9	19.9	23.4	26.0	28.7	31.8	35.0	38.7	43.5	48.1
355	20.1	22.4	26.3	29.2	32.3	35.8	39.5	43.7	49.0	54.1
400	22.7	26.4	29.7	34.4	36.4	42.1	44.5	51.4	55.2	63.7
450	25.5	29.6	33.4	38.7	41.0	47.4	50.0	57.7	-	-
500	28.4	32.9	37.1	42.9	45.5	52.6	55.6	64.2	-	-
560	31.7	36.7	41.5	48.0	51.0	58.9	-	-	-	-
630	35.7	41.3	46.7	54.0	57.3	68.1	-	-	-	-

Fittings : All the compatible fittings will be made available to cater system requirements.

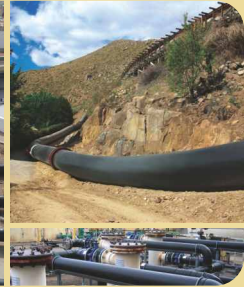
Applications



Underground sewerage application



Industrial effluents application



Pressurized sewer application



Outfall application

Worldclass Mega Project



An aerial view of mega project at Gadegaon, Dist. Jalgaon (MS) spread over 132 acres having built up area of over 1.5 million sq. ft.

The Supreme Industries Ltd. (Plastic Piping Division)

Corporate Office: 1161/1162, Solitair Corporate Park, Building No. 11,167, Guru Hargovindji Marg, Chakala, Andheri Ghatkopar Link Road, Andheri (East) Mumbai - 400 093. India. Tel: 91-22-67710000, 40430000

Regd. Office: 612 Raheja Chambers, Nariman Point, Mumbai 400 021. India. Tel.: (022) 22851656, 22820072
E-mail: pvc-pipes@supreme.co.in Website: www.supreme.co.in

Export Division: Tel: 91-22-6771 0126 / 4043 0126; Fax: 6771 0130

Overseas Office: Sharjah, UAE. Tel# +971 6 557 4484; Fax# +971 6 557 4485

CIN: L35920MH1942PLC003554

Branch Offices  **Tel.**

- Ahmedabad** : 079-30028371
- Bangalore** : 080-30913715
- Chennai** : 044-39811182
- Cochin** : 0484-2385346
- Hyderabad** : 040-23221130
- Indore** : 0731-2432684
- Jaipur** : 09910995853
- Jalgaon** Gadegaon : 0257-3050541,42
- Kanpur** : 0512-2332280
- Kolkata** : 033-30070123
- Noida (Delhi)** : 0120-6660000

Authorised Distributor



I & T SIL Gadegaon, Dist-Jalgaon ● PC/PES-MP/MKG/116 ● REV.00-04/2018