

Flush Valve

The Supreme Industries Ltd., is an acknowledged leader of India's plastic industry. It is credited with pioneering several path breaking products and has been a torch bearer in the transition from conventional to advanced plastic piping products in the country. Its customer centric approach fuels its research for designing unmatched quality products to meet the aspirations of its quality conscious customers. The innovative product portfolio offered by Supreme is extensive in range and application and comprises variety of pipes and vast spectrum of fittings totaling over 8000 diverse products.

In line with the tradition of pioneering many innovative

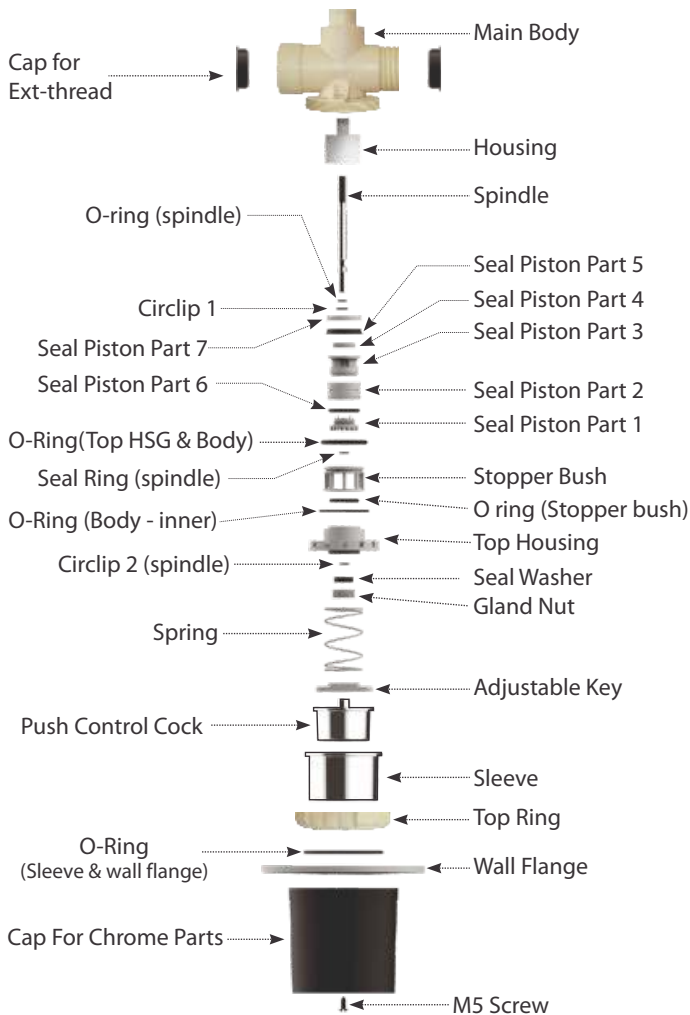
products, we are pleased to introduce one more innovative product '**Flush Valve**' in engineering plastics. This valve supplied with chrome finishing is totally free from corrosion, leakages, staining and offer longer service life. Inbuilt flow regulating mechanism of this valve is very useful in case of water shortages. Compact and sturdy design offers consistent performance under repeated flushing, thus helps to reduce maintenance costs. Looking at its excellent features it has emerged as the most economical alternative to the costly valves available in the market.

Unique Features

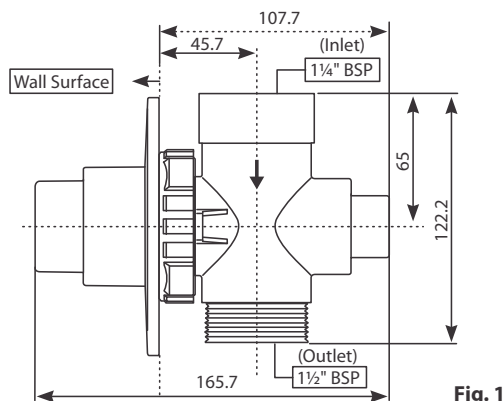
- Compact and sturdy design
- Easy and smooth to operate
- Efficient flushing with proper flow regulation
- Consistent performance under repeated flushing
- Flow can be adjusted as per the application requirement
- Elegant look - chrome finished Push Button and Wall Flange
- Free from staining
- Free from corrosion
- Threaded connections for easy installation
- Push button for smooth flushing
- Long life
- Cost effective



Construction of Concealed Flush Valve

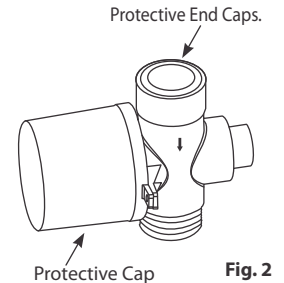


Dimension Details



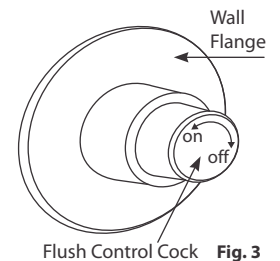
Working Mechanism

The Push Control Cock (Fig.3) is pressed to flush the water. The discharge volume at household pressure is minimum 6 ± 1 liters at full open condition. The volume is regulated by the push cock. Rotate it in clockwise direction to reduce the discharge and in anti-clockwise direction to increase the same (see Fig.3).



Maintenance

To avoid water wastage due to damaged part, the valve can be shut off by turning the push cock clockwise till it is tightened. After the shut-off, the mechanism can be removed without disturbing the pipeline. The damaged part can be replaced accordingly.



Installation Procedure

1. Flush Valve is supplied in assembled form with the protection caps (Fig.2) and wall flange in separate packing.
2. Flush valve is provided with threaded ends on both inlet and outlet sides. The inlet threads are 1 1/4" BSP and outlet threads are 1 1/2" BSP. Remove the caps on inlet and outlet to fit it on the wall in its proper place to connect with the pipe ends.
2. Ensure that pipe ends are clean and free from debris. Use of Teflon tape or thread sealant is recommended while fixing the flush valve with threaded pipe. After making the joints, ensure that both the joints are leak proof prior to concealing.
3. Remove the cap from chrome plated parts only after completion of installation and finishing of the wall to protect them from scratches.
4. After removing the cap, slide fit the wall flange.
5. Working pressure of the flush valve is 1-4 bar.