

WC Manifold

The Supreme Industries Ltd., is an acknowledged leader of India's plastic industry. Its customer centric approach fuels its research for designing unmatched quality products to meet the aspirations of its quality conscious customers. The innovative product portfolio offered by Supreme is extensive in range and application and comprises variety of pipes and vast spectrum of fittings totaling over 8000 diverse products.

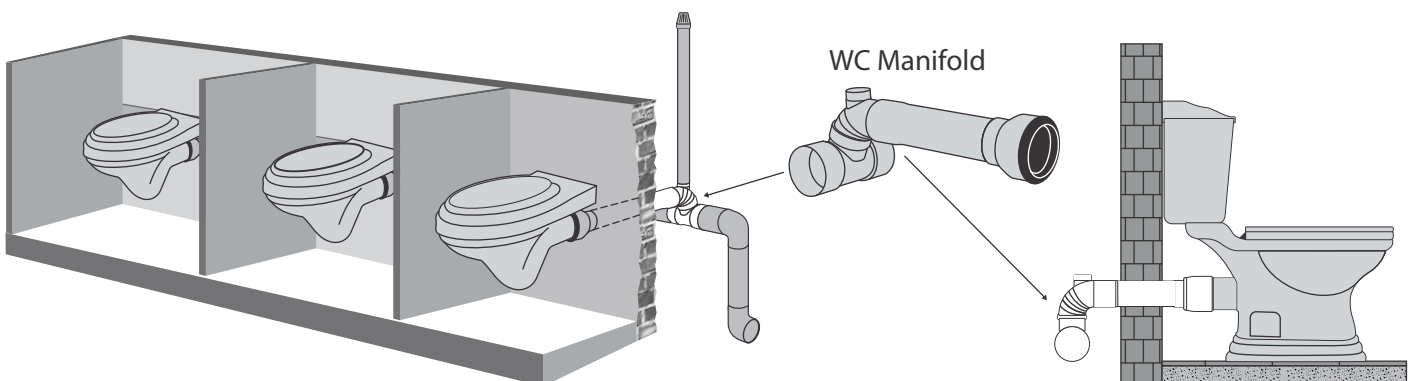
'WC Manifold' is yet another unique product designed by the company to overcome all the difficulties while

connecting the different toilets in series. Due to this user-friendly product the entire installation job becomes simple and fast. This is most useful for public toilets and commercial constructions where many toilets in series are required to be connected to the common drain running behind the toilet structure. WC manifold is suitable for installation inside the duct as well as on the surface. This innovative product provides greater flexibility of installation besides extensive saving in time and labor.



Unique Features

- Easy and quick installation of toilets in series
- Need less no. of fittings and less space
- Provides uniform fall at every WC connection
- Useful for wall mounted as well as floor mounted WC's
- Up to 6 WC's can be connected to single horizontal drain pipe
- Provided with inbuilt vent outlet
- 100% Leakproof

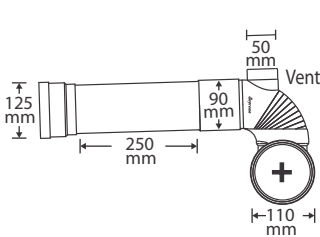


Jeevan bhar ka saath...

Wc Manifold System

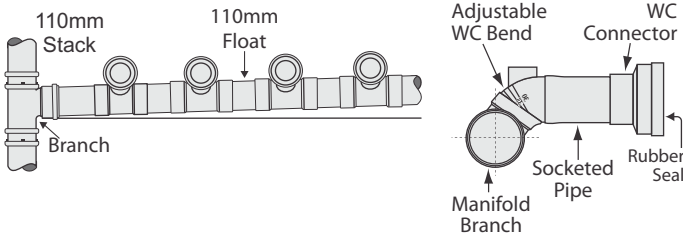
The WC manifold system includes four different components viz. WC connector, socketed pipe, adjustable 90° WC bend and swept tee. WC bend is provided with guiding marks for cutting at different angles to facilitate individual WC connection by maintaining uniform fall and the tee is specially designed to adopt the bend at different angles. These components are supplied together as a set and can be assembled on site as per the site requirements.

Dimension Details

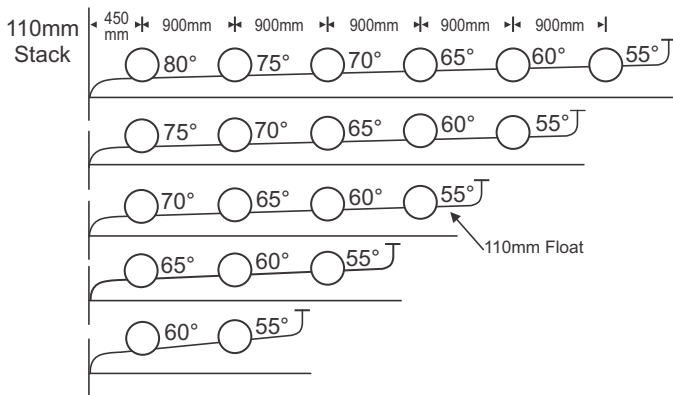


Component Name	Dimensions (mm)	Type of Joint
WC Connector	125 x 110	S x S
Socketed Pipe	∅ 90 x 300(L)	S x Spg
WC Bend	∅ 90	Spg x Spg
Swept Tee	110 x 90	S x S

Installation Methodology

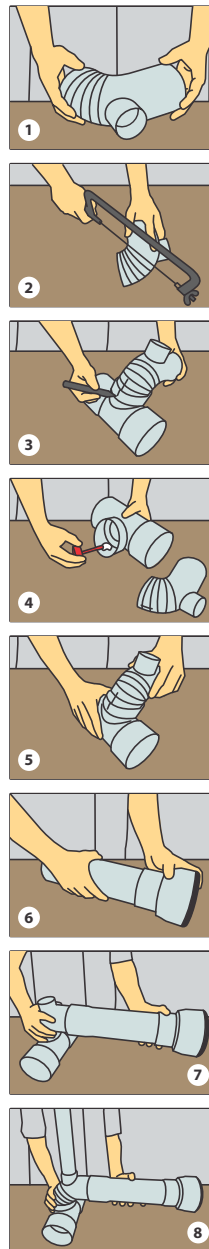


Adjustable WC bend angle cutting guide for no. of toilets in series



No. of WCs	WC bend angles					
	WC1	WC2	WC3	WC4	WC5	WC6
6	80°	75°	70°	65°	60°	55°
5	75°	70°	65°	60°	55°	-
4	70°	65°	60°	55°	-	-
3	65°	60°	55°	-	-	-
2	60°	55°	-	-	-	-

Installation Procedure



1. Select the angles to be cut on the bend according to number of WCs required to be connected in series to single horizontal drain with a uniform fall.
2. Once the angle to be cut is selected, remove the unwanted portion of bend by cutting the bend using guiding mark.
3. Check and ensure the alignment of joint between the WC bend and the tee by inserting spigot of bend into socket portion of tee and same is to be marked using marker.
4. Apply solvent cement on socket of tee and spigot of WC bend.
5. Make the joint between bend and tee ensuring the alignment as per earlier marked lines.
6. Make the joint between socketed pipe of pre-decided length with the WC connector.
7. Now make the joint of tee and bend assembly with socketed pipe and WC connector (mounted on WC pan). This completes the installation of WC manifold.
8. Provide the vent pipe through vent outlet if required.